

**SATURDAY - MAY 18 - 11 AM TO 5 PM**  
**SUNDAY - MAY 19 - 11 AM TO 4 PM**



# REMODELED HOMES TOUR 2024

A detailed guide to highlighting this year's featured home remodeling projects in the Treasure Valley from initial challenges to final results.

[www.idahonari.org](http://www.idahonari.org)



Your home is your castle... your refuge... and often, the deepest expression of who you are. You want to ensure that you choose a remodeler who understands your vision-and has the skills and integrity to deliver what you want, on time and on-budget. Idaho is one of the few states that does not require contractors to be licensed (though they are required to register with the Division of Occupational and Professional Licensing) so it's important that you understand who you are hiring and what to expect.

The National Association of the Remodeling Industry Idaho Chapter is dedicated to promoting professionalism, education, and ethics in the remodeling industry throughout our community. NARI members include full-service contractors, design-build firms, manufacturers, suppliers, distributors, subcontractors, lenders and other related professionals who work in the remodeling field.

Each NARI member is required to sign a Code of Ethics in which they agree to adhere to good business practices and performance specifications. By using a NARI member, you can rest assured that you are working with a remodeling professional who is willing to stake his or her reputation on providing the best of service excellence.

**Visit us on:**





## Whole House Remodel

This 10-year-old home underwent a comprehensive transformation to realize the vision of a modern dream residence. Exterior modifications included replacing porch posts, eliminating a dormer window, and integrating stucco for an updated façade. Inside, we executed a complete overhaul of the main floor, encompassing the kitchen, master and hall bathrooms, fireplace, office space, and introduction of a wine bar.

## Driving Directions

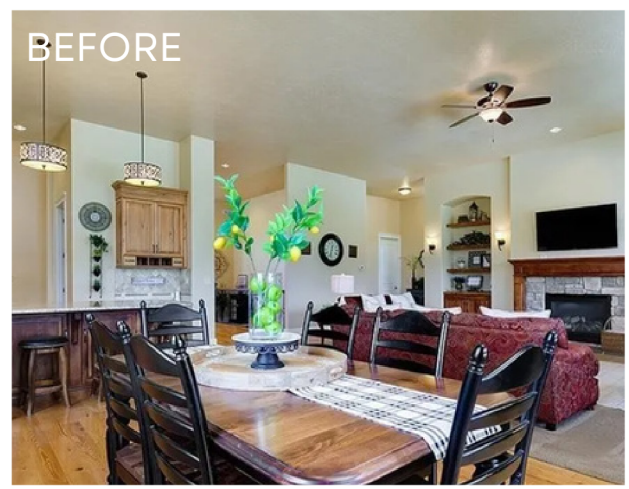
At the intersection of Meridian Rd and 20/26 (Chinden), head North on Meridian Rd for ¼ mile. Turn right on W. Chartwell Dr and travel ¼ mile. Turn right on W. Cadbury and drive 300', home is on the left.

2694 W Cadbury Dr  
Eagle, ID 83616



## Contact Info

Boyd Remodeling and Construction  
6126 W State St, Suite 504  
Boise, ID 83703  
208.406.0253  
[www.boydrc.com](http://www.boydrc.com)  
RCE - 39448



BEFORE

1

AFTER







2

2519 W Newbury Ct  
Eagle, ID 83616

Transforming a 1500 sqft sport court into five distinct rooms, this project delivers luxurious living spaces and amenities. Upstairs, find an office, powder bathroom, and hidden speakeasy. Downstairs, enjoy a gym, powder bath, and spa with a sauna, steam room, and recessed cold plunge. A 150' addition extends the home, complemented by full landscaping for a complete transformation.

## Contact Info

Tucker Wilkins  
Wilko Customs  
(208) 371-8379  
<https://buildbook.co/pro/wilkocustomsllc>

## Bathroom Remodel

The clients goal and vision for this remodel was to keep the main bones of the bathroom but update and refresh it with a marble looking tile and brighten up the overall room. She had a budget to work with so we worked with that and we brought her vision to life!

## Driving Directions

Located off of Floating Feather Rd  
in Eagle



## Contact Info

CCH Design | Remodel  
2230 W Everest Ln #150  
Meridian, ID 83646  
208.944.0332  
[www.yourhomeremodeled.com](http://www.yourhomeremodeled.com)

1804 N Parkforest Way  
Eagle, ID 83616



3

AFTER







AFTER

4



BEFORE

7829 W Swift Ln  
Boise, ID 83704

## ADU Unit New Construction

A new-construction, 2-bed 1.5-bath accessory dwelling unit with an attached two-car garage and spacious covered porch. This ADU is full of light with large windows and French door access onto the wrap-around porch in the main living space. This ADU boasts a full kitchen, multiple storage closets, and a full bedroom with ensuite bathroom as the primary living quarters.

## Driving Directions

Head North on N Cole Road, turning left onto W Swift Lane. The ADU is on the left-hand side at the end of a u-shaped drive.

## Contact Info

Ethos Design + Build | Remodel  
2999 W Moore St  
Boise, ID 83702  
[info@ethosdesignremodel.com](mailto:info@ethosdesignremodel.com)  
208.999.2358  
[ethosdesignremodel.com](http://ethosdesignremodel.com)





## ADU Unit Remodel

This former detached garage has new life as a 1-bed 1-bath accessory dwelling unit complete with a full bath, kitchenette, and open storage loft. This ADU is packed with personality and retro flair, perfect for short-term stays or a private office space.

## Driving Directions

Heading west on Main Street, turn right up N 25th Street. Then, turn right onto W Jefferson Street and the home is on the right.

2415 W Jefferson St  
Boise, ID 83702



## Contact Info

Ethos Design + Build | Remodel  
2999 W Moore St  
Boise, ID 83702  
[info@ethosdesignremodel.com](mailto:info@ethosdesignremodel.com)  
208.999.2358  
[ethosdesignremodel.com](http://ethosdesignremodel.com)



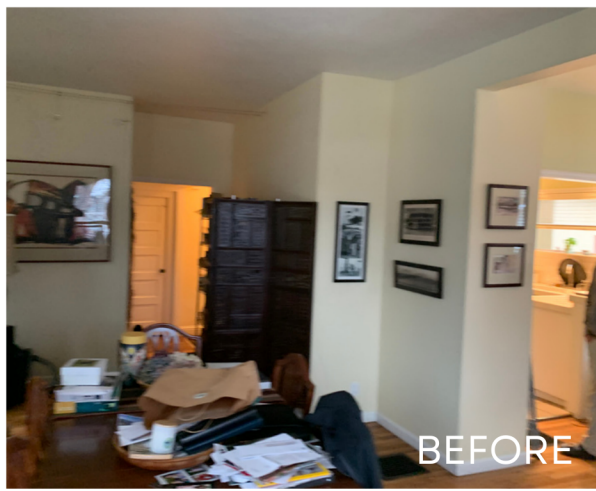
IN-PROGRESS

5

STOP BY THIS PROJECT TO SEE THE FINISHED PRODUCT



1902 N 15th St  
Boise, ID 83702



BEFORE

## Kitchen Remodel

The small and secluded kitchen of this 1905 home was removed in entirety, including load-bearing walls. A new, larger, open concept kitchen design was implemented to both take advantage of unused space and allow more daylight to pour into the space. Existing structural challenges were present with this home that had experienced a number of flips over its lifetime. Structural upgrades to the home were made and showcased with exposed beams along with successfully exposing the original brick of the center chimney as a design feature. The completed design is both spacious, open and beautiful.

## Driving Directions

Via the connector (I-84) towards downtown Boise, turn left onto 15th Street, continue past W. Fort Street. Home is on your right at the corner of 15th & Hazel.

## Contact Info

STRITE design + remodel  
2650 Grover Ct  
Boise, ID 83705  
208.336.9176  
[www.stritedr.com](http://www.stritedr.com)



AFTER

6





RENAISSANCE  
*Remodeling*

## Kitchen + Patio Remodel

The project involved renovating the kitchen interior and rebuilding and stabilizing the exterior patio.

## Driving Directions

Follow S Broadway Ave | Continue onto N Ave B/W State St | Follow W State St | Traffic circle, 1st exit Reserve St | Left on Reserve St/N Santa Maria Dr

## Contact Info

Renaissance Remodeling  
4220 Osage St  
Garden City, ID 83714  
info@remodelboise.com  
208.384.0591  
www.remodelboise.com

1113 Santa Maria Dr  
Boise, ID 83712



7





8



## Contact Info

Renaissance Remodeling  
4220 Osage St  
Garden City, ID 83714  
[info@remodelboise.com](mailto:info@remodelboise.com)  
208.384.0591  
[www.remodelboise.com](http://www.remodelboise.com)

423 W Hale St  
Boise, ID 83706

## Kitchen + Living Remodel

The project entailed renovating the interior kitchen and living area while incorporating a new dining room in the previous patio area.

## Driving Directions

Continue on US-20 E/US-26 E/W Myrtle St.  
| Take E Park Blvd to S Colorado Ave |  
Follow S Colorado Ave to W Hale St



RENAISSANCE  
*Remodeling*



## Kitchen Remodel

This late 80s home was in a great location and had a nice layout. The kitchen was very dated with a low ceiling and hanging cabinets. The kitchen layout only allowed one way in and out. The renovation involved removing the dropped ceiling, exposing the vaulted ceiling above. A wall was moved over into the living room, allowing room for an island. The sunken floor in the living room was raised so as to be continuous with the remainder of the house. The new kitchen included all new cabinets, granite countertops, and appliances. New LVT flooring was installed throughout the house and doors and trim were updated.



### Contact Info

Gammill Construction  
1612 N 6th St  
Boise, ID 83702  
208.376.7828  
[www.gammillconstructioninc.com](http://www.gammillconstructioninc.com)

371 E Old Saybrook Dr  
Boise, ID 83706



9

AFTER







AFTER

10



BEFORE

Virtual Tour Only  
visit [www.idahonari.org](http://www.idahonari.org)

## Whole House Remodel

This existing year 2000 home underwent a full remodel to the interior and exterior with all new windows, siding, roofing and entry way/porch. Two additions were incorporated - one at the front entry and one to expand the primary bedroom/bathroom suite at the rear of the home. All new finishes installed throughout the interior. Large existing central fireplace in the middle of the home was removed to create large open floor plan for kitchen, living, and dining. In addition to the full home remodel, a new free-standing 3-car garage was constructed to the North of the property as well.

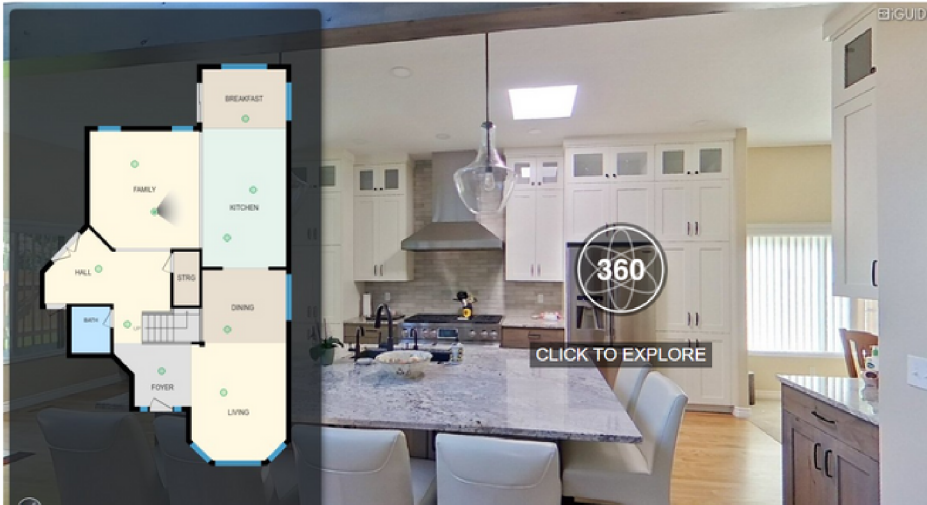
## Contact Info

STRITE design + remodel  
2650 Grover Ct  
Boise, ID 83705  
208.336.9176  
[www.stritedr.com](http://www.stritedr.com)



## Virtual Walk-Through

To view the Virtual Walk-Through, click on "360" to begin.  
Use your mouse or finger to "walk" your way through the home.  
Please note: There are multiple tabs within the window.



# VIRTUAL TOURS AVAILABLE!

Visit [idahanari.org](https://idahanari.org) to tour all projects virtually and learn more about Idaho's best remodeling contractors.



## REMODELED HOMES TOUR 2024

