

SATURDAY • SEPTEMBER 23 • 11AM–5PM
SUNDAY • SEPTEMBER 24 • 11AM–4PM



NATIONAL ASSOCIATION OF
THE REMODELING INDUSTRY
Remodeling Done Right.™

IDAHO

REMODELED HOMES TOUR 2023

A detailed guide highlighting this year's featured home remodeling projects in the Treasure Valley: from initial challenges to final results.

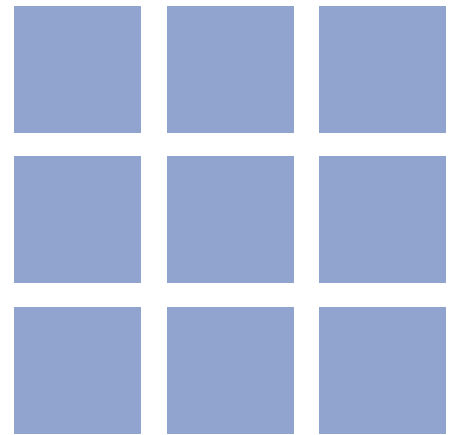
IdahoNARI.org



NATIONAL ASSOCIATION OF
THE REMODELING INDUSTRY

Remodeling Done Right.™

IDAHO



Your home is your castle...your refuge...and often, the deepest expression of who you are. You want to ensure that you choose a remodeler who understands your vision—and has the skills and integrity to deliver what you want, on time and on-budget. Idaho is one of the few states that does not require contractors to be licensed (though they are required to register with the Division of Occupational and Professional Licensing) so it's important that you understand who you are hiring and what to expect.

The National Association of the Remodeling Industry Idaho Chapter is dedicated to promoting professionalism, education, and ethics in the remodeling industry throughout our community. NARI members include full-service contractors, design-build firms, manufacturers, suppliers, distributors, subcontractors, lenders and other related professionals who work in the remodeling field.

Each NARI member is required to sign a Code of Ethics in which they agree to adhere to good business practices and performance specifications. By using a NARI member, you can rest assured that you are working with a remodeling professional who is willing to stake his or her reputation on providing the best of service excellence.

Visit us on:





48 years and counting...our blessings!

For nearly five decades STRITE design + remodel has been translating our clients' lifestyle aspirations into home renovations of lasting value. We couldn't have accomplished this without the vision of our clients, the dedication of our staff, the professionalism of our trade partners, and the inspiration that comes from living in a great community.

Thank you Boise, we look forward to many more years to come!

208.336.9176

www.stritedr.com

STRITE

design
+
remodel

Kitchen Remodel

The owners' goal for this remodel was to update and open up the kitchen and staircase to create a more open and inviting space for family and friends. Removing a bearing wall opened up the kitchen, and replacing stair half-walls with railings opened up the entry to achieve a complete 360-degree look, as well as completely change how this home would function daily and allow more space and openness for entertaining.

Driving Directions

Located in between E. McMillan Road and E. Ustick Road.

3460 N. Summerside Way
Meridian, Idaho 83646

Take the video tour!

Visit www.IdahoNARI.org

Contact Info

Alicia Stephens
CCH Design | Remodel
2230 W. Everest Lane, #150
Meridian, Idaho 83646
208.573.1037
alicia@yourhomeremodeled.com

YourHomeRemodeled.com

CCH
DESIGN | REMODEL



BEFORE

1



AFTER



SCAN ME

YOU DREAM IT, WE DESIGN + BUILD IT

CCH
DESIGN | REMODEL

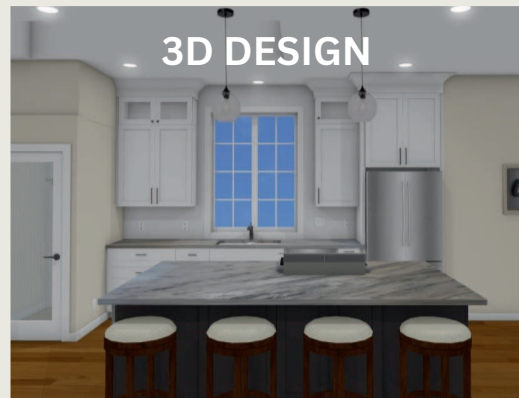
CCH Design | Remodel is a **full service** design and remodel firm. We specialize in taking your vision for your home to reality.

Give us a call to schedule your complimentary design consultation!
(208) 573-1037


LEARN MORE



FINISHED PROJECT



SCHEDULE YOUR COMPLIMENTARY CONSULTATION TODAY!

 (208) 573-1037

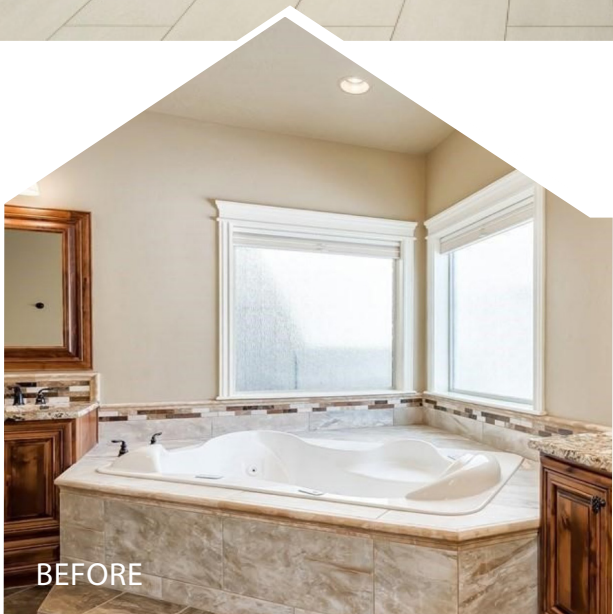
 SALES@YOURHOMEREMODELED.COM

 CCH.DESIGN.REMODEL

CCH
DESIGN | REMODEL



2



3000 W. Newberry Court
Eagle, Idaho 83616

Take the video tour!
Visit www.idahoNARI.org

Contact Info

Anthony Boyd
Boyd Remodeling and Construction LLC
208-412-5269
anthony@boydrc.com

BoydRC.com

Master Bath

We added square footage to a small master bathroom by building out the master suite and incorporating a sauna, free standing tub, walk in shower, custom vanities, and quartz countertops.

Driving Directions

Head west on 20-26, turn right (north) on Meridian Rd, turn right (east) on W Chartwell Dr, right (north) on S Donnington Ave and it will turn into Newberry Court.



Outdoor Remodel

The clients already had a beautiful pool built and needed a great place for entertaining. We built a nice outdoor kitchen with a BBQ, pizza oven, TV, refrigerators and a sink for them to enjoy the outdoors.

Driving Directions

Off of W Beacon Light Rd, turn south on Hearthglow Pl, turn right (west) on Wellhouse Court. Project is on the left.

3849 W. Wellhouse Court Eagle, Idaho 83616

Take the video tour!

Visit www.IdahoNARI.org

Contact Info

Anthony Boyd
Boyd Remodeling and Construction LLC
208-412-5269
anthony@boydrc.com

BoydRC.com



BEFORE

3

AFTER





AFTER

4



BEFORE

2767 E. Courtland Drive
Eagle, Idaho 83616

Take the video tour!

Visit www.IdahoNari.org

Contact Info

Anna-Marie Vargas
Ethos Design+Build | Remodel
2999 W. Moore Street
Boise, ID 83702
208.995.4543
info@ethosdesignremodel.com

EthosDesignRemodel.com

Whole Home

A full core-living remodel, this project included a completely new kitchen, new windows, and a french door to bring in more light and provide better access to the outdoor living space and removal of an outdated fireplace to improve the flow of the room.

Driving Directions

Driving northwest on State Street from Boise, turn north onto Highway 55. Turn west onto Hill Road, then south onto Parkinson Place. Turn west onto E Courtland Drive.



Outdoor Living Space

This darling historic district home on Harrison Boulevard was built in the 1940s and needed an updated outdoor living area for entertaining and enjoying the many Idaho seasons. These North End homeowners love a good party, especially during Halloween season!

We aimed to provide them with a beautiful outdoor space that would be perfect for entertaining friends and family any time of year. What was once a mix of old decking and uneven concrete with an unfriendly large 'drop-off', became a jaw-dropping A-framed patio area. We used modern oversized paver tile flooring, dramatic wooden posts and beams and an in-ground splash pad water feature. We provided the homeowners with significantly more space for entertaining that protects them from the seasonal elements and shade on hot Boise summer days.

The roofline of the patio ties into the original roof of the home seamlessly, making it appear that it was there all along! New sconce lighting and two ceiling fans create a breezy and chill atmosphere with even ground making a safe area for guests to hang around. To put a bow on it, we added a She-Shed attached to the garage that boasts two gorgeous gel-stained French doors. You do not want to miss touring this dreamy outdoor living space!

Driving Directions

From Downtown Boise | Go to S 15th St (0.6 m) | Turn on W Hays St (0.1 m) | Continue to N Harrison Blvd (236 ft) | Parking is limited | Park & Walk.

900 N. Harrison Blvd.
Boise, Idaho 83702

Take the video tour!

Visit www.IdahoNari.org

Contact Info

Renaissance Remodeling
4220 N. Osage Street
Garden City, ID 83714
208.384.0591
info@remodelboise.com
marketing@remodelboise.com

RemodelBoise.com



5





AFTER



BEFORE

6

1404 N. 7th Street
Boise, Idaho 83702

Take the video tour!

Visit www.IdahoNari.org

Contact Info

Anna-Marie Vargas
Ethos Design+Build | Remodel
2999 W. Moore Street
Boise, ID 83702
208.995.4543
info@ethosdesignremodel.com

ethosdesignremodel.com

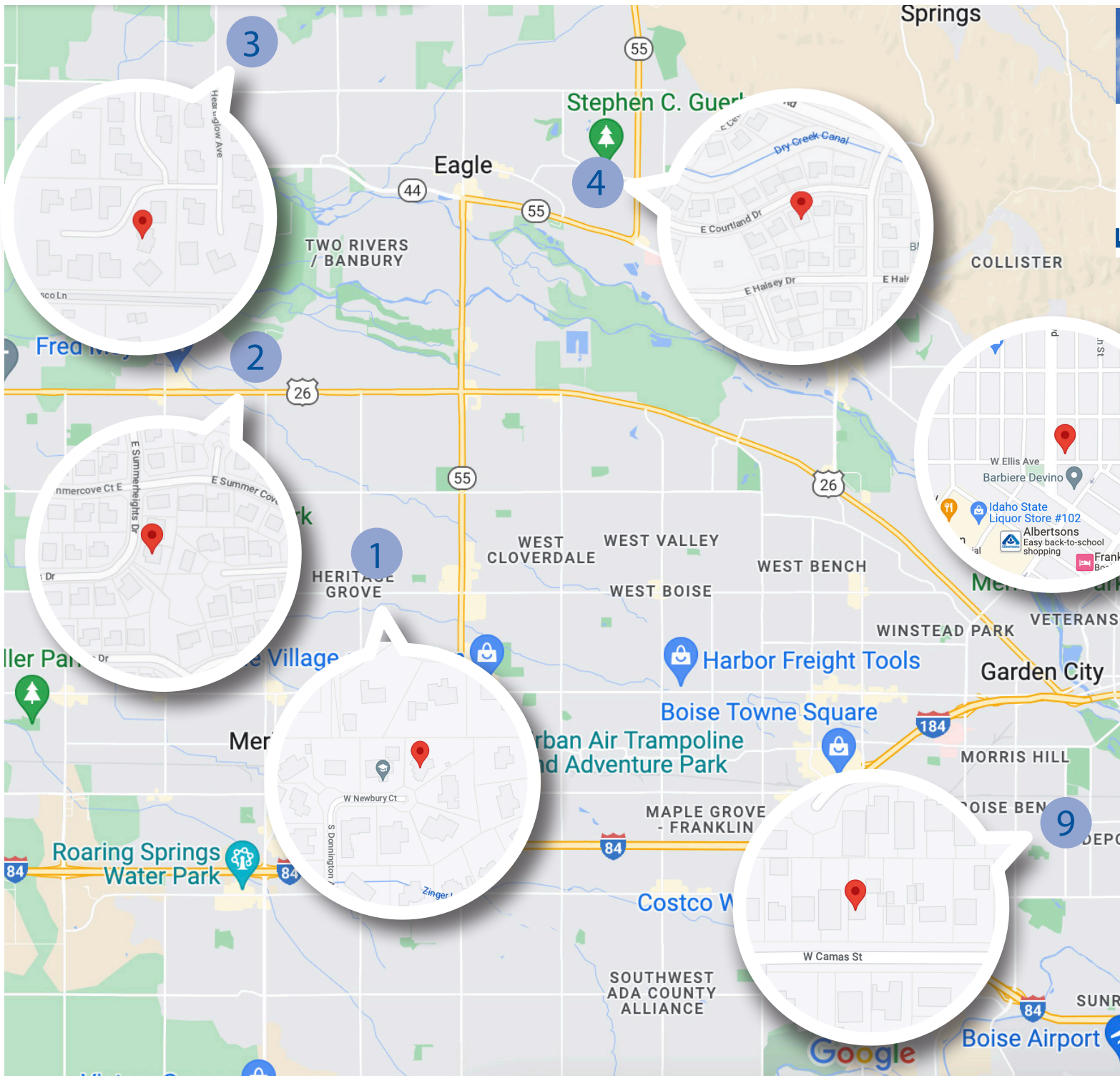
Whole Home

Extensive remodel of a historic home built in 1890 that included a new kitchen and core living space, two larger rooms with custom cabinetry and storage solutions, and a study. New flooring and base trim throughout that was created from a custom template designed to match the original historic trim in the home. Paint, new vaulted ceiling with reclaimed wood, and additional windows are just a few key features of this remodel.

Driving Directions

From Harrison Boulevard, turn onto West Resseguie Street and continue until the intersection of Resseguie and 7th St. The home is there on the corner!



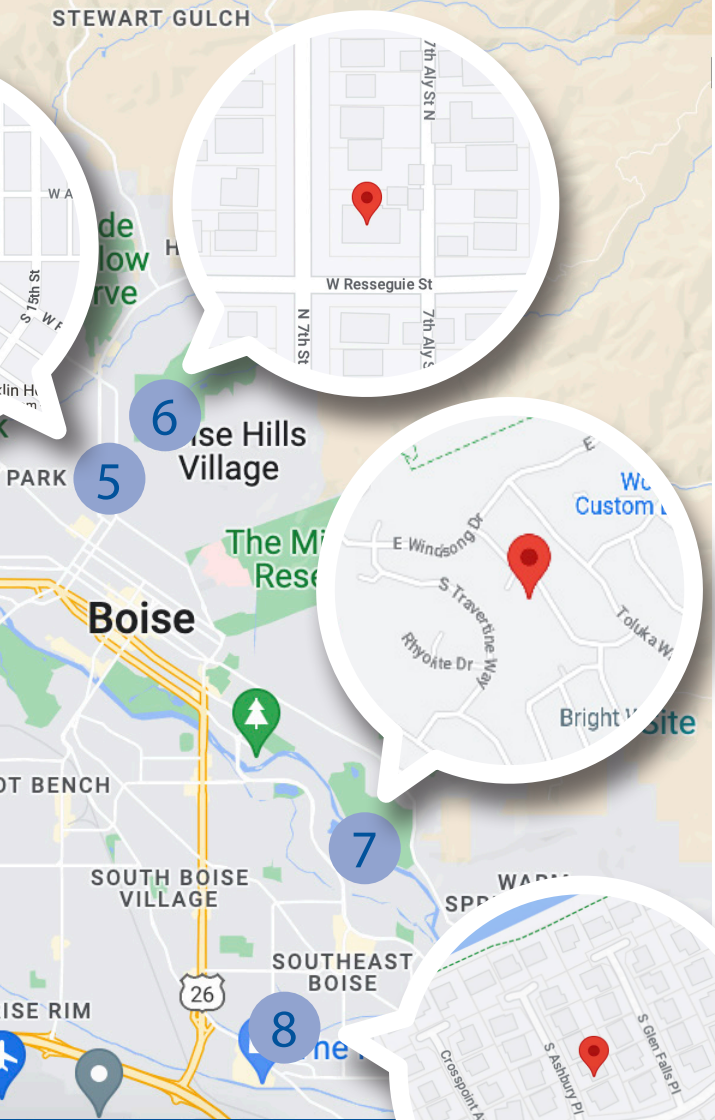


- 1 CCH Design/Remodel
3460 N. Summerside Way, Meridian
- 2 Boyd Remodeling & Construction
3000 W. Newbury Ct., Eagle
- 3 Boyd Remodeling & Construction
3849 W. Wellhouse, Eagle
- 4 Ethos Design + Remodel
2267 E. Courtland, Eagle

- 5 Renaissance Remodeling
900 N. Harrison Blvd., Boise
- 6 Ethos Design + Remodel
1404 N. 7th Street, Boise
- 7 Renaissance Remodeling
2817 E. Hard Rock Drive
- 8 Gammill Construction
3392 S. Ashbury, Boise



REMODELED HOMES TOUR 2023



- 9 Ethos Design + Remodel
4320 W. Camas, Boise
- 10 Levco Builders
ONLINE ONLY at IdahoNARI.org



11627 W. FAIRVIEW AVE.
BOISE, IDAHO 83713

(208)376-1901
CloverdalePlumbing.com



24-HOUR EMERGENCY SERVICE



the
fixture Gallery
Decorative Plumbing



Be inspired by our complete selection of top tier plumbing, bath, and kitchen fixtures.

(208) 972-5888
777 N Five Mile Rd, Boise, ID 83713

Whole Home

Our Design + Build Team were eager to open the main living space to highlight the homeowners' amazing view of the Treasure Valley!

The new expansive open floorplan concept was once crowded by outdated decorative columns and various flooring types which disconnected the space visually. We removed unnecessary columns while continuing their gorgeous White Oak flooring throughout the entire main living area. We installed an expansive multi-slide glass door in place of windows giving this home the view it deserves! We continued the home refresh to the built-in cabinetry and optimized the kitchen by carefully rearranging the appliances while maintaining the existing cabinet style and fine finish work.

The result is a stunning Idaho Mountain Modern home with a high functioning living area that showcases the beautiful Warm Springs Mesa view from every angle.

Driving Directions

West Park Center Blvd (3.8 m) | Traffic-Circle 3rd exit to East Warm Springs Ave (0.3) | Left on Harris Ranch Rd (1.5 m) | East Windsong Drive | Hard Rock Way (0.7 m).

2817 E. Hard Rock Drive Boise, Idaho 83712

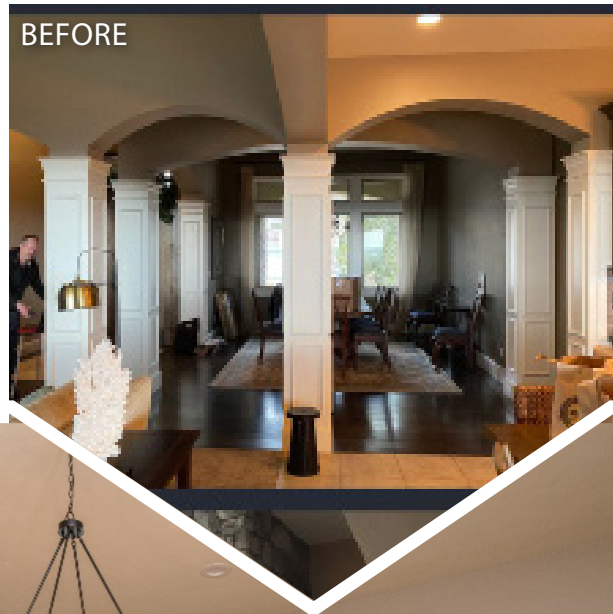
Take the video tour!

Visit www.IdahoNari.org

Contact Info

Renaissance Remodeling
4220 N. Osage Street
Garden City, ID 83714
208.384.0591
info@remodelboise.com
marketing@remodelboise.com

RemodelBoise.com



BEFORE

7

AFTER





AFTER



BEFORE

8

3392 S. Ashbury Place Boise, Idaho 83706

Take the video tour!

Visit www.idahoNARI.org

Contact Info

Timothy Gammill
Gammill Construction Inc.
208.866.0563 (office)
tim@gammillconstructioninc.com

GammillConstructionInc.com

Kitchen, Master Bedroom/Bath

This late 80s home in the Lakewood subdivision was in a great location, had good bones, but was very dated. Our company had done a small addition and remodel to the home in the early 90s for the same homeowners. This renovation modernized the whole house, adding a small addition to open up the kitchen. The resultant kitchen is spacious and functional with a large island. Upstairs the master suite was a complete redesign, resulting in a spacious shower, toilet room, and his & hers walk in closets. The result is a beautiful, modern, cohesive home that the owners are loving.

Driving Directions

From E ParkCenter, turn south on to Apple. Turn west on E. Ridgefield Dr. Turn right on Ashbury Pl. The home is on the right.



2nd Story Addition

A second-story addition on the Boise Bench. We took off the roof and added a new second story, with a beautiful stair case and vaulted ceilings with exposed beams upstairs. The addition added 3 new bedrooms, an office, a bathroom, and a family room with a storage closet to the home.

Driving Directions

Passing Morris Hill Cemetery, turn south onto South Roosevelt Street. Turn west onto West Camas Street and see the home on your right!

4320 Camas Street Boise, Idaho 83705

Take the video tour!

Visit www.IdahoNARI.org

Contact Info

Anna-Marie Vargas
Ethos Design + Remodel
2999 W. Moore Street
Boise, ID 83702
208.995.4543
info@ethosdesignremodel.com

EthosDesignRemodel.com



9



Find Inspiration For Your Dream Kitchen



Many of the most beautiful, functional kitchens in the world feature Sub-Zero and Wolf appliances. You'll see some of them in our Culinary Center when you visit our showroom. We can help you develop a vision of what your own dream kitchen can be - a kitchen where you, your family, your guests can enjoy a lifetime of moments worth savoring.



Scan me



Chf Home Furnishings

Ranked #15th Independent Premiere Retailer in the Nation
by Home Furnishings Business Magazine Dec. 2018



208-343-7769

Mon-Fri 10-7
Saturday 10-6

104 S. Orchard in Boise • Corner of Franklin & Orchard
www.shopchf.com





AFTER

10



BEFORE

THIS HOME TOUR IS AVAILABLE ONLINE ONLY

Contact Info

Joe Levitch
Levco Remodeling
114 East 35th Street
Boise, ID 83714
208.947.7261
joe@levcobuilders.com

LevcoBuilders.com

Whole Home Renovation

Levco was asked to remodel a home by the owner who already had plans drawn by an architect friend of the family. The home is on a river and had an existing, poorly designed Primary Suite. The home had a beautiful view that was not able to be fully enjoyed and the wooden first-floor deck was deteriorating. The client also had a decorator who assisted in making finish material selections.

Several key modifications were made during the project. We enlarged the stamped concrete patio to make it fit to relocate a deck support post to avoid conflicting with a French door.

We also changed the orientation of the barrier-free shower drain to use a concealed linear drain.



REMODELED HOMES TOUR 2023

VIRTUAL Tour of Remodeled Homes

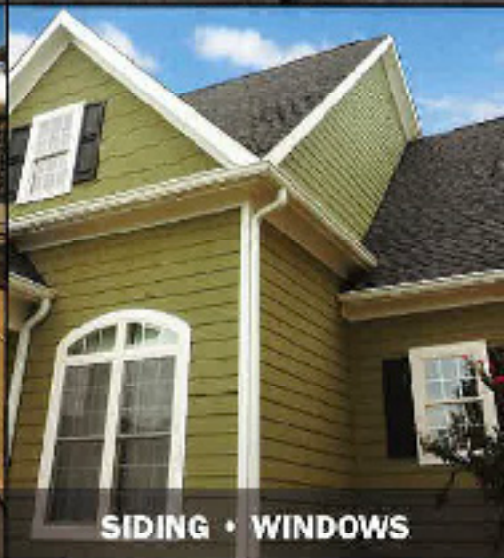
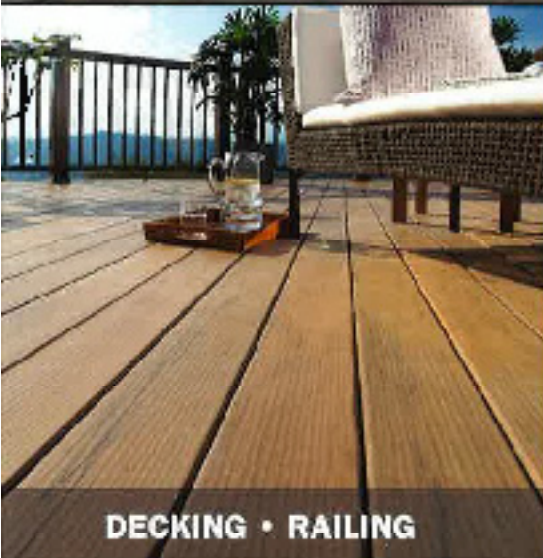
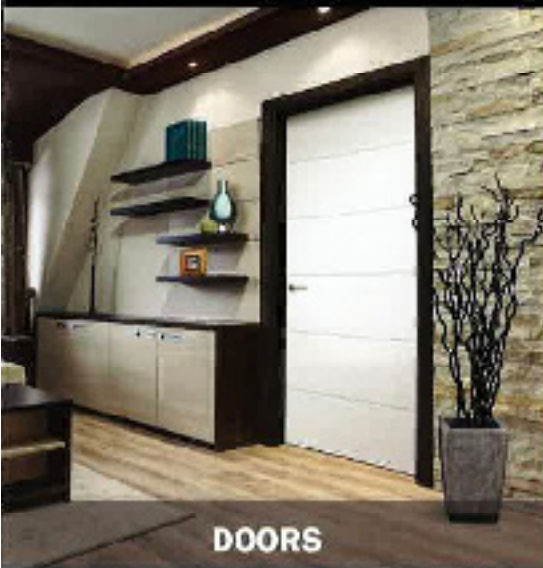


View the VIRTUAL TOUR of
remodeled homes at:
IdahoNARI.org



PROUD to be your BUILDING PARTNER

We can assist you with your project from start to finish.



DESIGN SERVICES • INSTALLATION • DELIVERY



www.franklinbuildingsupply.com

